

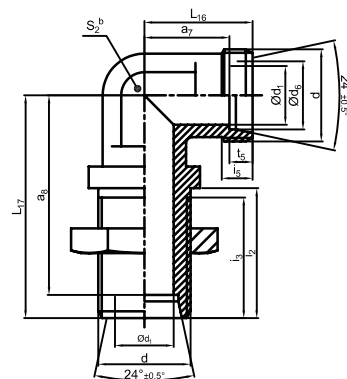
ISO 8434-1-2008-BHE

Blago: USVL / USVS

Parker: WSV Bulkhead elbow - EO 24° cone end

Eaton: 6C9-90° metric male 24° L.T. / 6D9-90° metric male 24° H.T.

Brennan: WSV MBT-MBT 90 DEG BH



ACEI item.#	Thread d	d1 réf.	d17 ±0.2	i5 min.	i3 min.	i2 ±0.2	L16 ±0.3	L17 ±0.3	S2	a7 ref.	a8 ref.	t5
HU3ELI8434-1BHEL06	M12X1.5	4	17	7	30	34	19	48	12	12	41	7
HU3ELI8434-1BHEL08	M14X1.5	6	19	7	30	34	21	51	12	14	44	7
HU3ELI8434-1BHEL10	M16X1.5	8	22	8	31	35	22	53	14	15	46	7
HU3ELI8434-1BHEL12	M18X1.5	10	24	8	32	36	24	56	17	17	49	7
HU3ELI8434-1BHEL15	M22X1.5	12	27	9	34	38	28	61	19	21	54	7
HU3ELI8434-1BHEL18	M26X1.5	15	32	9	36	40	31	64	24	23.5	56.5	7.5
HU3ELI8434-1BHEL22	M30X2.0	19	36	10	37	42	35	72	27	27.5	64.5	7.5
HU3ELI8434-1BHEL28	M36X2.0	24	42	10	38	43	38	77	36	30.5	69.5	7.5
HU3ELI8434-1BHEL35	M45X2.0	30	50	12	42	47	45	86	41	34.5	75.5	10.5
HU3ELI8434-1BHEL42	M52X2.0	36	60	12	42	47	51	90	50	40	79	11
HU3ELI8434-1BHES06	M14X1.5	4	19	9	32	36	23	53	12	16	46	7
HU3ELI8434-1BHES08	M16X1.5	5	22	9	32	36	24	54	14	17	47	7
HU3ELI8434-1BHES10	M18X1.5	7	24	9	33	37	25	57	17	17.5	49.5	7.5
HU3ELI8434-1BHES12	M20X1.5	8	27	9	34	38	29	59	17	21.5	51.5	7.5
HU3ELI8434-1BHES16	M24X1.5	12	30	11	36	40	33	64	24	24.5	55.5	8.5
HU3ELI8434-1BHES20	M30X2.0	16	36	12	39	44	37	74	27	26.5	63.5	10.5
HU3ELI8434-1BHES25	M36X2.0	20	42	14	42	47	42	81	36	30	69	12
HU3ELI8434-1BHES30	M42X2.0	25	50	16	46	51	49	90	41	35.5	76.5	13.5
HU3ELI8434-1BHES38	M52X2.0	32	60	18	48	53	57	96	50	41	80	16