

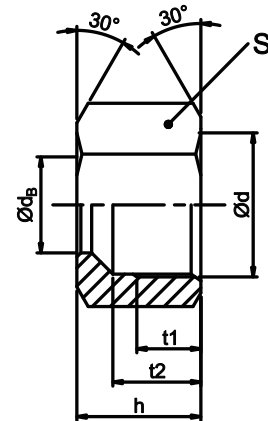
**ISO 8434-1 Tube Nut / DIN 3870 Coupling Nut**

Blago:ML/MS

Parker: M Nut.EO 24° Cone End

Eaton: NL/NS

Brennan: UM.MBT Tube Nut



ACEI item.#	db B11	db +0.1	S -0.3	d 6H	h +0.5	t1 Min.	t2 +0.2	N.W. g
HU2I8434-1TNLL04	04		10	M8X1.0	11.0	5	7.5	4.2
HU2I8434-1TNLL05	05		12	M10X1.0	11.5	5.5	7.8	5.7
HU2I8434-1TNLL06	06		12	M10X1.0	11.5	5.5	8.2	5.5
HU2I8434-1TNLL08	08		14	M12X1.0	12.0	6	8.7	6.9
★HU2I8434-1TNLL10	10		17	M14X1.0	12.5	8	9.5	11.2
★HU2I8434-1TNLL12	12		19	M16X1.0	13.0	8	9.5	13.7
HU2I8434-1TNL06	06		14	M12X1.5	14.5	7	10	9.1
HU2I8434-1TNL08	08		17	M14X1.5	14.5	7	10	14.2
HU2I8434-1TNL10	10		19	M16X1.5	15.5	8	11	17.5
HU2I8434-1TNL12	12		22	M18X1.5	15.5	8	11	24.9
HU2I8434-1TNL15	15		27	M22X1.5	17.0	8.5	11.5	40.9
HU2I8434-1TNL18	18		32	M26X1.5	18.0	8.5	11.5	61.7
HU2I8434-1TNL22	22		36	M30X2.0	20.0	9.5	13.5	81.2
HU2I8434-1TNL28	28		41	M36X2.0	21.0	10	14	92.3
HU2I8434-1TNL35		35	50	M45X2.0	24.0	12	16	141.0
HU2I8434-1TNL42		42	60	M52X2.0	24.0	12	16	224.0
HU2I8434-1TNS06	06		17	M14X1.5	16.5	8.5	11	17.3
HU2I8434-1TNS08	08		19	M16X1.5	16.5	8.5	11	21.0
HU2I8434-1TNS10	10		22	M18X1.5	17.5	8.5	11	30.5
HU2I8434-1TNS12	12		24	M20X1.5	17.5	8.5	11	33.0
★HU2I8434-1TNS14	14		27	M22X1.5	20.5	10.5	13	52.2
HU2I8434-1TNS16	16		30	M24X1.5	20.5	10.5	13	65.5
HU2I8434-1TNS20	20		36	M30X2.0	24.0	12	15.5	109.7
HU2I8434-1TNS25	25		46	M36X2.0	27.0	14	17	216.5
HU2I8434-1TNS30		30	50	M42X2.0	29.0	15	18	237.8
HU2I8434-1TNS38		38	60	M52X2.0	32.5	17	19.5	339.0

★ Market items are not under the range of ISO 8434